

GALLERY 241
APRIL/MAY 2016



NATURE IN ITS OWN FORM

Curated by Virginia Fleming & Samantha Mitchell

Center for Creative Works

241 East Lancaster Ave,
Wynnewood, PA, 19096

The Center for Creative Works is a unique, arts-based vocational program for adults with developmental and intellectual disabilities. We provide a creative, generative atmosphere for our artists to work in diverse media and can explore professional techniques, work with new materials, and develop their personal visual expression. Our gallery hosts bi-monthly exhibitions curated by our staff of professional artists. The Center for Creative Works is a vivid, engaging place where artists with all types of abilities come together to inspire each other, learn, and work side by side.



[HTTP://WWW.CENTERFORCREATIVeworks.ORG](http://www.CenterforCreativeWorks.org)

[HTTP://WWW.FACEBOOK.COM/CENTERFORCREATIVeworks](http://www.facebook.com/CenterforCreativeWorks)

[HTTP://WWW.INSTAGRAM.COM/CENTER4CREATIVeworks](http://www.instagram.com/Center4CreativeWorks)

CONTACT: CCWEXHIBITIONS@GMAIL.COM

APRIL/MAY 2016 CATALOGUE

CONTENTS

LANDSCAPES
by Timothy O'Donovan
Page 3

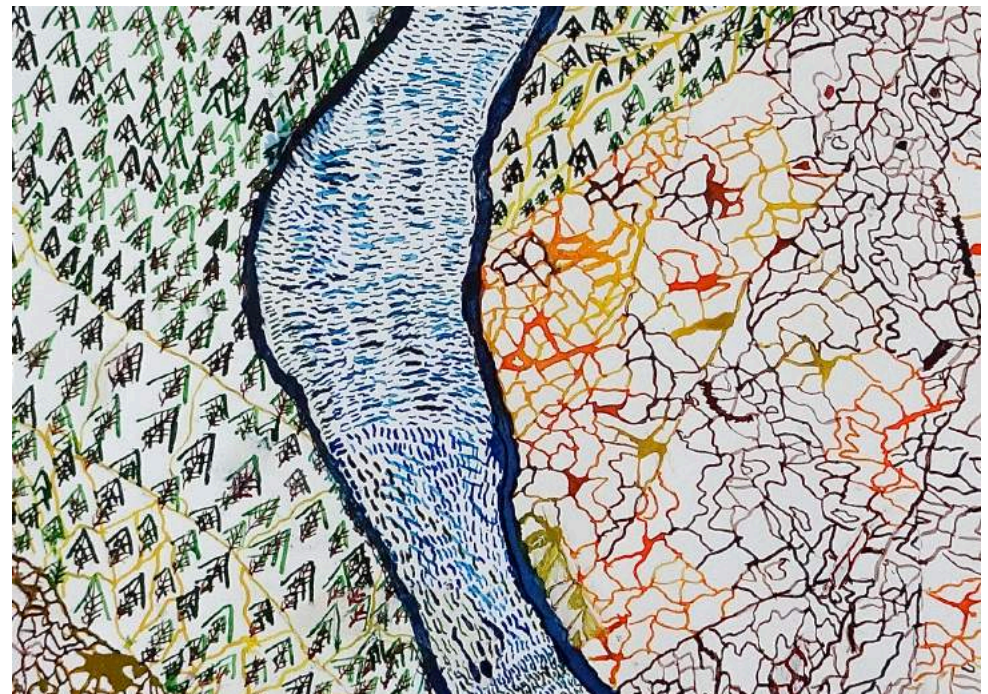
Image List
Page 4-7

About the Center for Creative Works
Page 8

The Gallery at CCW exhibits the artwork created at the center. With shows curated by our teachers – all practicing artists in the Philadelphia community – we showcase our most promising and exceptional participants in bi-monthly exhibitions.



ABOVE: detail, *Bus in the Woods*
BELOW: detail, *Yellowstone River*





8. *Untitled*
Levin Henry
13.4 x 17.5 inches,
mixed media on
paper, 2015

\$70



9. *Elephants*
Clyde Henry
20 x 26 inches, ink
on paper, 2016

\$90



10. *St. Coleman's Church*
Paige Donovan
24 x 18 inches,
Ink and gouache
on paper, 2015

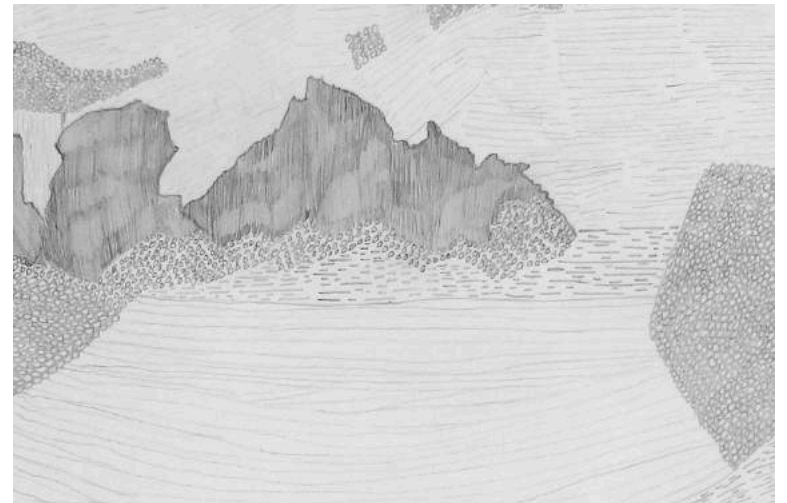
\$140

LANDSCAPES BY TIMOTHY O'DONOVAN

I like the idea of seeing nature by itself in its own form. I feel very comfortable with nature when I take hikes and walks wherever I am visiting or residing. I've been to a place that's very similar to Venice, Italy, when I went on vacation with my mom in Las Vegas. Cardiff is where I was born, and I visited that place in the late 70's, when my family was leaving South Africa.

My recent views of nature have brought me to work on pieces that remind me of all of the nature scenes I've seen in my life. Nature is important to me because I feel very comfortable there, it is something that I enjoy, and enjoy painting.

I feel more in control of my life and my emotions when I make a piece of artwork. If there is too much tension, I paint and draw while listening to natural music, sounds of the ocean, and Enya.



LIST OF WORKS



1. Untitled
Levin Henry
18 x 24 inches,
mixed media on
paper, 2015

\$90



**2. Yellowstone
River**
Timothy
O'Donovan
24 x 18 inches, ink
on paper, 2016

\$150



**3. Rainbow with
Snow**
Laurie Hughes
12 x 18 inches,
Ink and watercolor
on paper, 2015

\$70



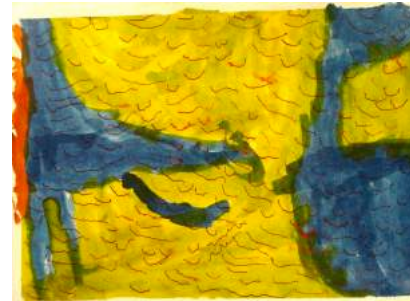
4. Bird
Clyde Henry
18 x 24 inches,
mixed media on
paper, 2015

\$90



5. Bus in the Woods
Paige Donovan
15 x 22 inches, ink
and watercolor on
paper, 2015

\$130



**6. Where There's a
Seal on the Land**
Laurie Hughes
9 x 12 inches,
ink and watercolor
on paper, 2016

\$50



**7. Cliffs of the
Oregon Coast**
Timothy
O'Donovan
16 x 20 inches,
graphite on paper,
2013

\$110